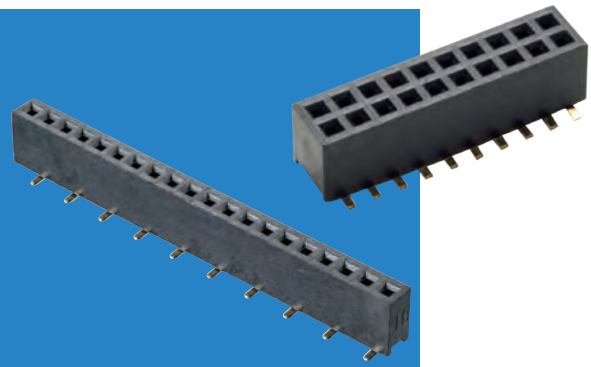


# Archer Connectors – M50

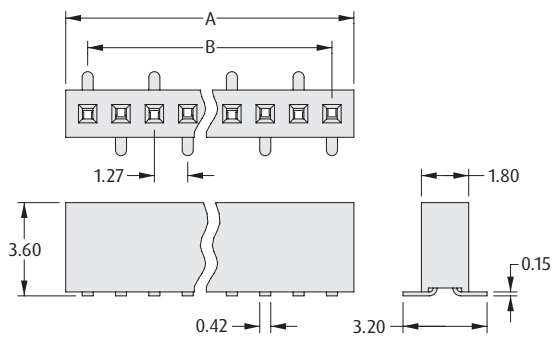
## Female Vertical Surface Mount, Low Profile

- Lower profile surface mount connector with twin beam contacts for additional board-to-board height options.
- Contact [technical@harwin.com](mailto:technical@harwin.com) for Tape and Reel options.



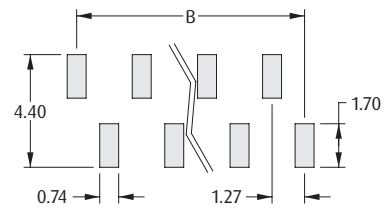
1.27mm (.050") PITCH

### SINGLE ROW



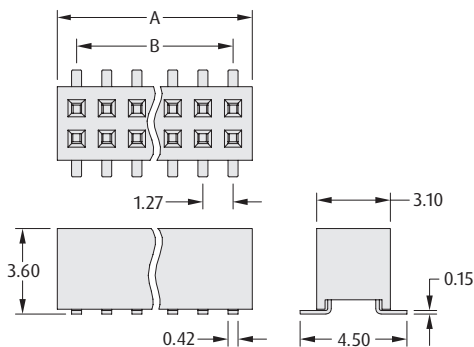
### CALCULATION

<b>A</b>	$B + 1.67$
<b>B</b>	$1.27 \times (\text{No. of contacts per row} - 1)$



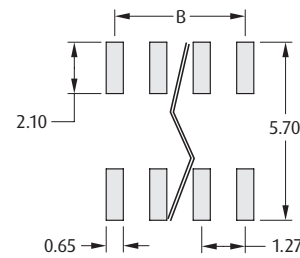
Recommended PC Board Pattern

### DOUBLE ROW



### CALCULATION

<b>A</b>	$B + 1.73$
<b>B</b>	$1.27 \times (\text{No. of contacts per row} - 1)$



Recommended PC Board Pattern

### HOW TO ORDER

**M50 - 31 X XX XX X**

#### SERIES CODE

#### TYPE

<b>2</b>	Double Row
<b>4</b>	Single Row

#### PACKAGING

<b>R</b>	Tape & Reeled (Single Row)
<b>Blank</b>	Loose

#### FINISH

<b>45</b>	Gold
-----------	------

#### NO. OF CONTACTS PER ROW

<b>03 to 50</b>	Double Row
<b>02 to 06, 08, 10, 20</b>	Single Row

All dimensions in mm.