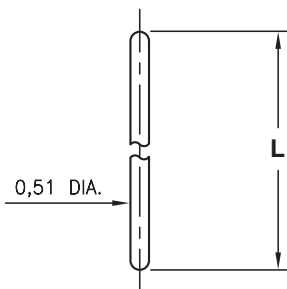


# MALE PCB PINS

## STRAIGHT AND RIGHT ANGLE PINS

### 3320

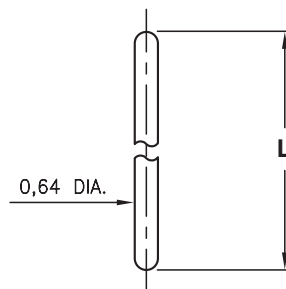
3320-X-00-XX-00-00-03-0



Basic Part Number	Length L
3320-0	6,35
3320-1	12,7

### 3325/6527

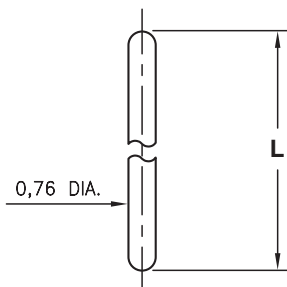
XXXX-X-00-XX-00-00-03-0



Basic Part Number	Length L
3325-0	6,35
3325-1	12,7
3325-2	19,05
6527-0	10,67

### 3330

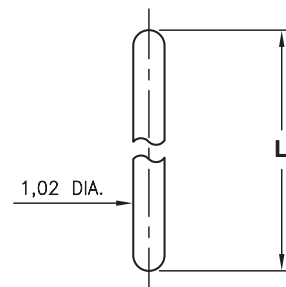
3330-X-00-XX-00-00-03-0



Basic Part Number	Length L
3330-0	6,35
3330-1	12,7
3330-2	19,05

### 3340

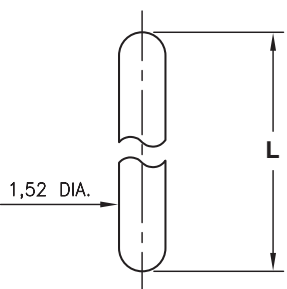
3340-X-00-XX-00-00-03-0



Basic Part Number	Length L
3340-0	6,35
3340-1	12,7
3340-2	19,05

### 3560

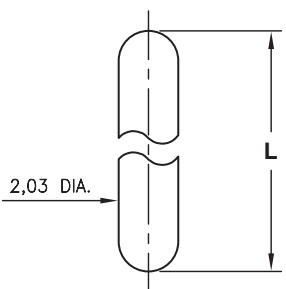
3560-X-00-XX-00-00-03-0



Basic Part Number	Length L
3560-0	6,35
3560-1	12,7
3560-2	19,05

### 3580

3580-X-00-XX-00-00-03-0



Basic Part Number	Length L
3580-0	6,35
3580-1	12,7
3580-2	19,05

#### SPECIFICATIONS:

**Pin Material:** Brass Alloy 360, 1/2 Hard  
(Except where noted)

**Dimensions:** Inches

**Tolerances On:** Lengths:  $\pm 0,13$   
Diameters:  $\pm 0,051$   
Angles:  $\pm 2^\circ$



**ORDER CODE:** XXXX - X - 00 - XX - 00 - 00 - 03 - 0

**BASIC PART #** →

← **SPECIFY PIN FINISH:**

- ◆ **80** 5,08 $\mu$ m TIN OVER NICKEL (RoHS)
- ◆ **15** 0,25 $\mu$ m GOLD OVER NICKEL (RoHS)

